

Integrating Protection Priorities for Land Conservation Organizations

Background

Outline

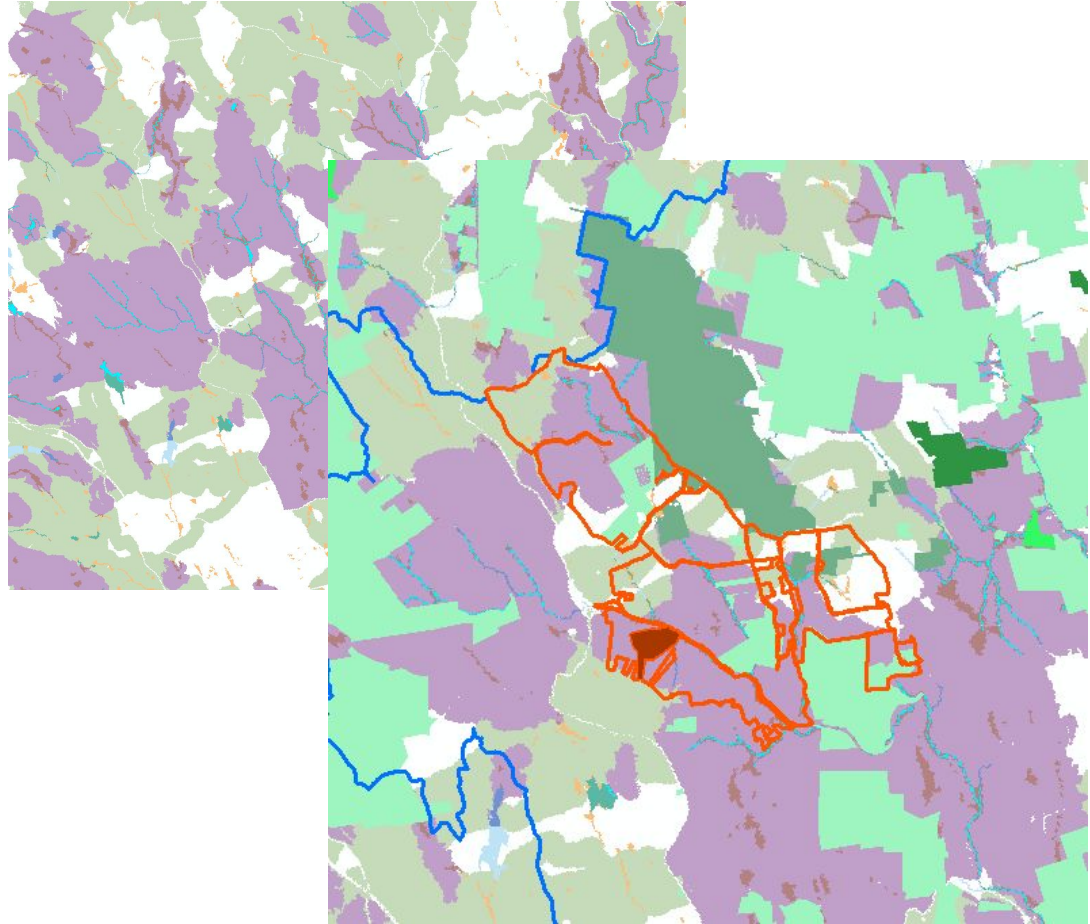
Define

Explore/Analyze

Background

Case Study: Refuge Land Acquisition

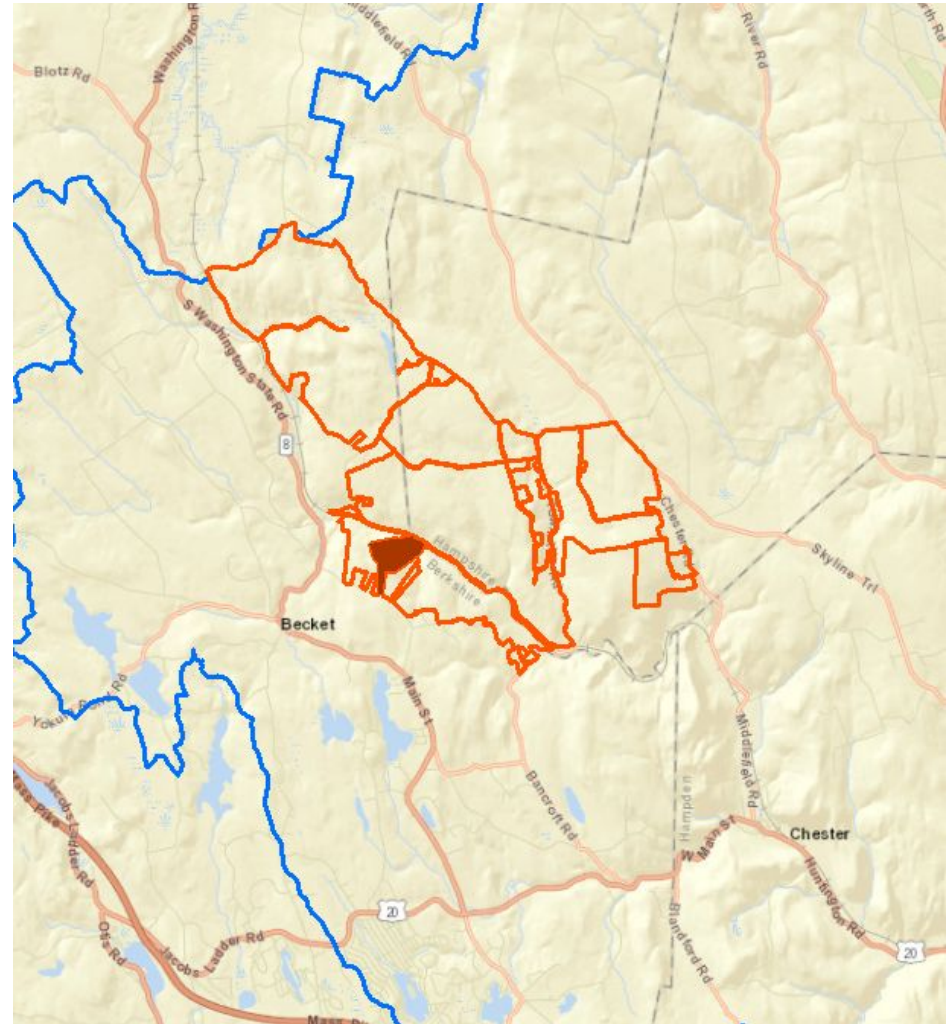
- Fundamental use of data and tools
- Helps answer question: “Where do we get most bang for our conservation buck?”
- Identify most ecologically important areas
- Integrate with organizational priorities



Outline:

Identify the problem, the resource of interest and what actions need to be implemented

- Limited resources available for acquisition of new lands
- Where will we get the most ecological “bang for our buck?”

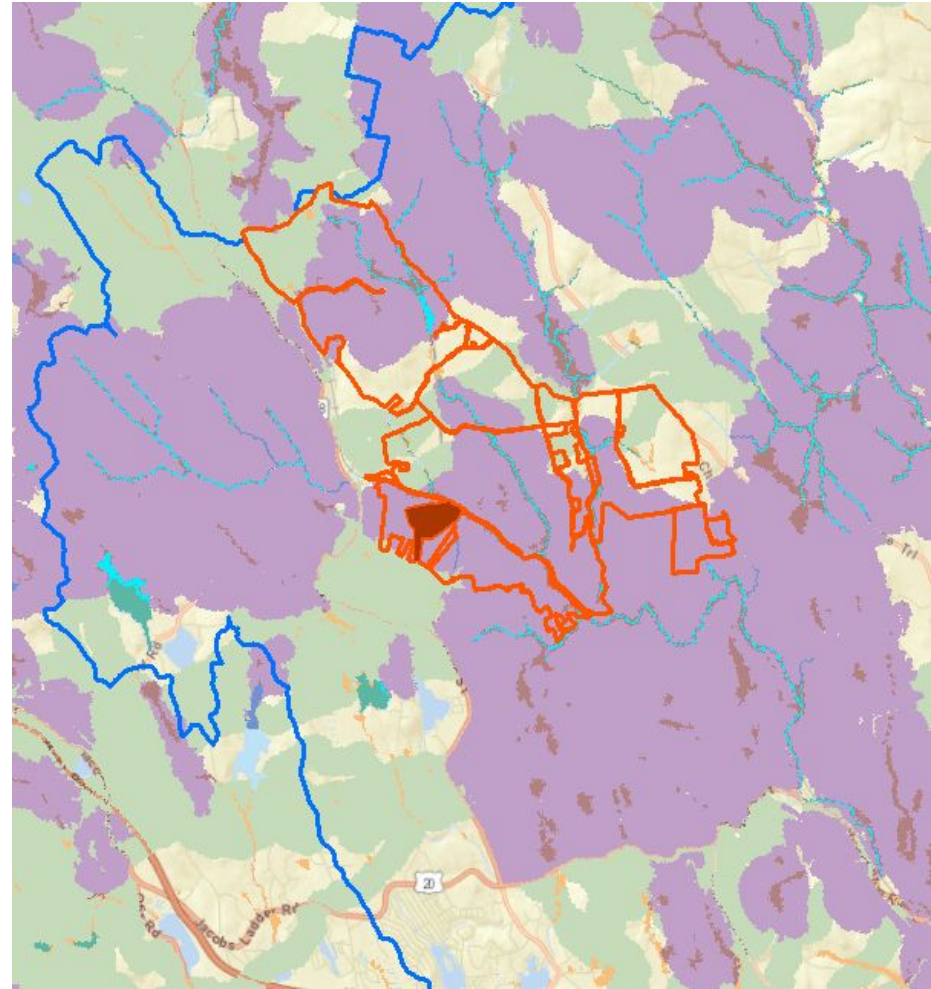


Define:

Identify important aspects to consider while you are investigating

In this case, bang for buck would mean a few things:

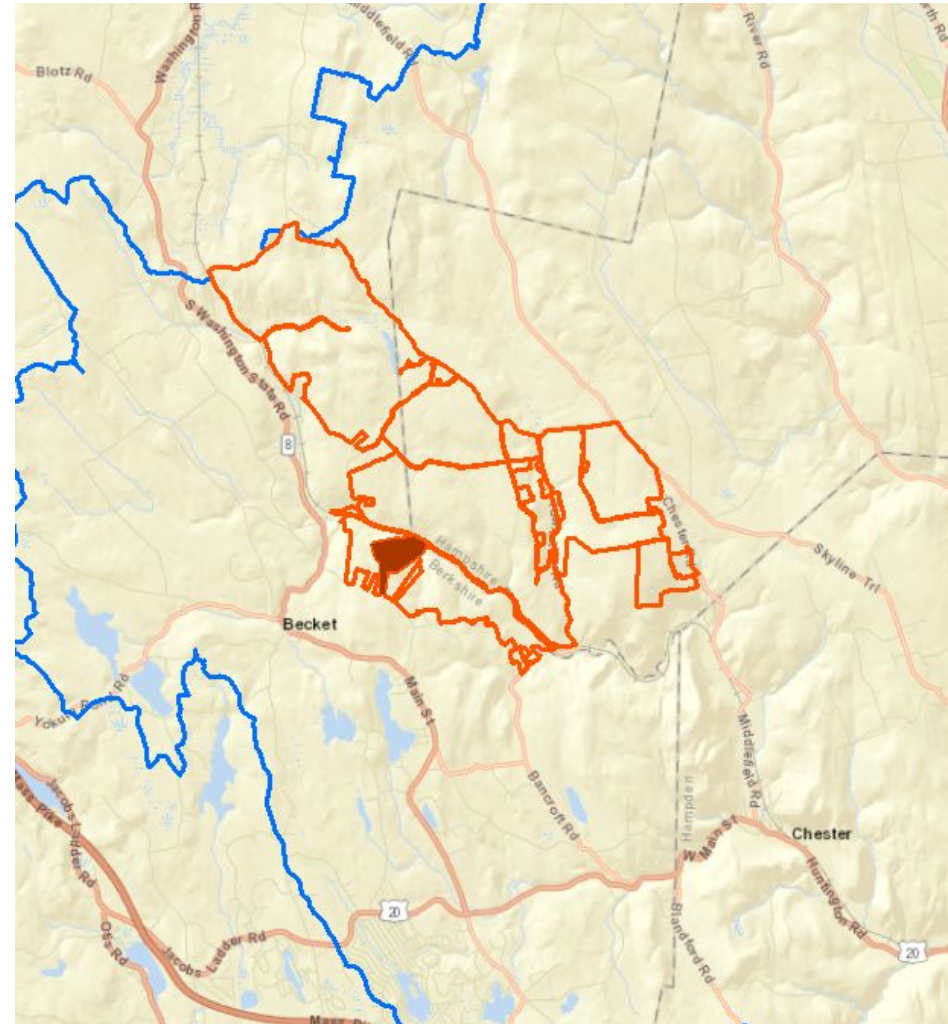
- The best areas identified by the Nature's Network Conservation Design
- Take into consideration existing refuge lands
- Take into consideration other existing protected areas
- Take into consideration the best areas for Blackburnian warblers



Explore/Analyze:

Identify specific opportunities by integrating or overlaying the data

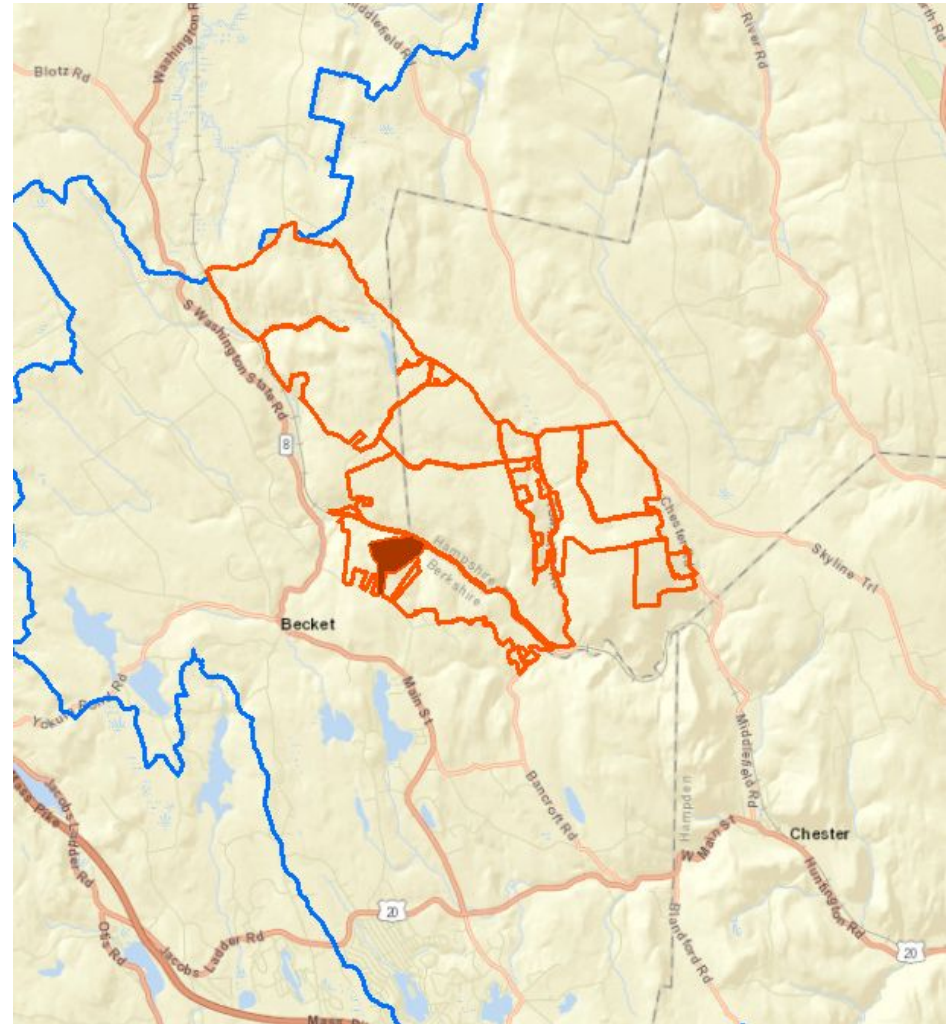
What are the boundaries of the project?



Explore/Analyze:

Identify specific opportunities by integrating or overlaying the data

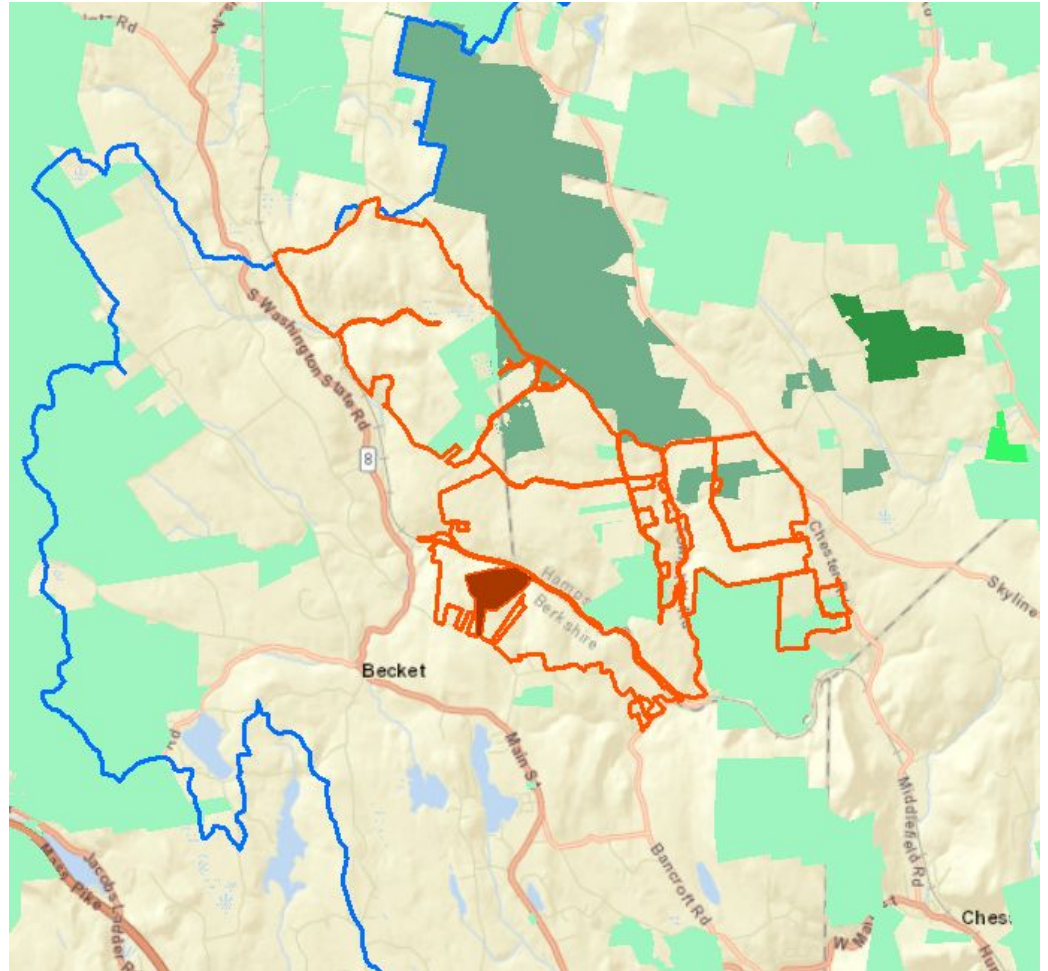
What is already owned by the refuge?



Explore/Analyze:

Identify specific opportunities by integrating or overlaying the data

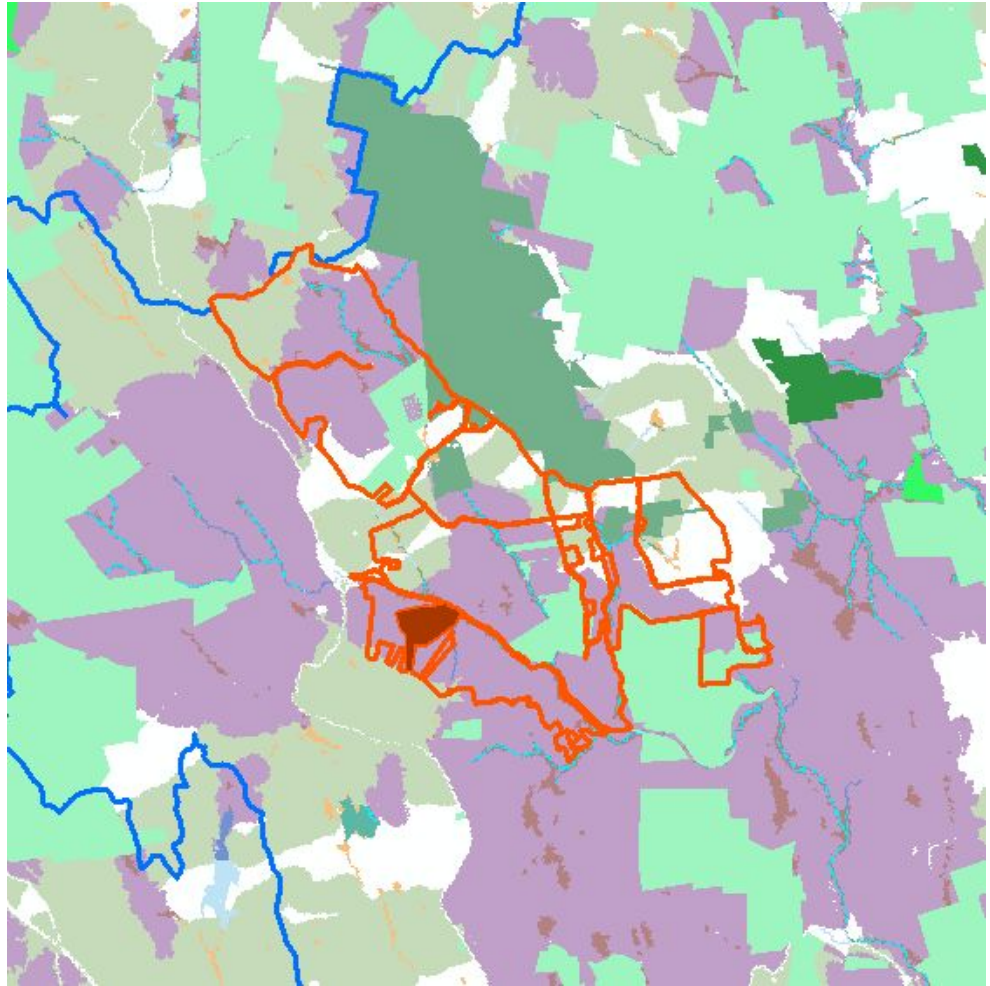
What is already protected through other means?



Explore/Analyze:

Identify specific opportunities by integrating or overlaying the data

What are the best places according to Nature's Network?



Explore/Analyze:

Identify specific opportunities by integrating or overlaying the data

What places within that might be best for Blackburnian Warbler?

